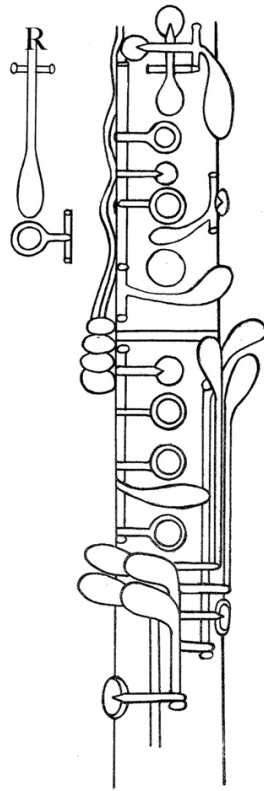


Master Clarinet Fingering Chart

Rheuben Allen



Master Clarinet Fingering Chart

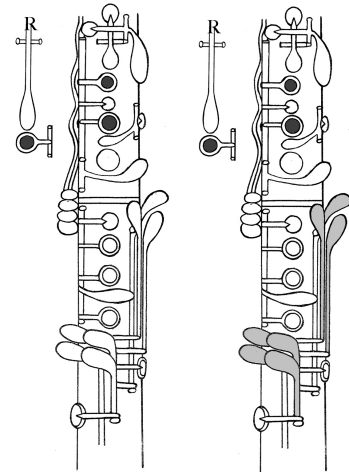
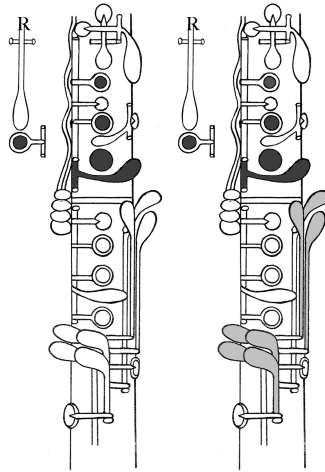
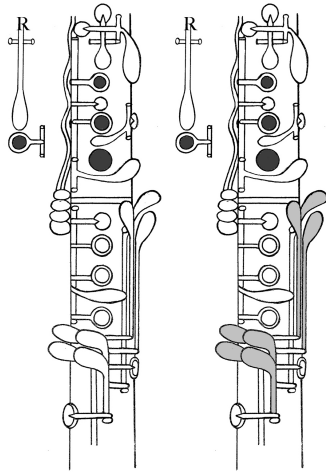
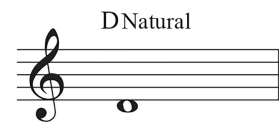
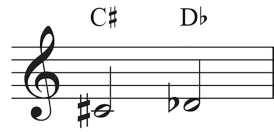
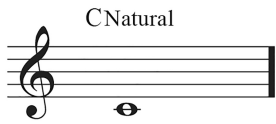
E Natural F Natural F# Gb GNatural

This section contains five musical examples. Each example consists of a treble clef staff with a 4/4 time signature and a single note on the second line (G4). Below each staff are two diagrams of a clarinet showing the fingerings for the note. 1. E Natural: Staff shows a whole note on the second line. Diagrams show the left hand with index, middle, and ring fingers on keys 1, 2, and 3, and the right hand with index, middle, and ring fingers on keys 4, 5, and 6. 2. F Natural: Staff shows a whole note on the second line. Diagrams show the left hand with index, middle, and ring fingers on keys 1, 2, and 3, and the right hand with index, middle, and ring fingers on keys 4, 5, and 6. 3. F#: Staff shows a whole note on the second line with a sharp sign above it. Diagrams show the left hand with index, middle, and ring fingers on keys 1, 2, and 3, and the right hand with index, middle, and ring fingers on keys 4, 5, and 6. 4. Gb: Staff shows a whole note on the second line with a flat sign above it. Diagrams show the left hand with index, middle, and ring fingers on keys 1, 2, and 3, and the right hand with index, middle, and ring fingers on keys 4, 5, and 6. 5. GNatural: Staff shows a whole note on the second line. Diagrams show the left hand with index, middle, and ring fingers on keys 1, 2, and 3, and the right hand with index, middle, and ring fingers on keys 4, 5, and 6.

G# Ab ANatural A# Bb BNatural

This section contains six musical examples. Each example consists of a treble clef staff with a 4/4 time signature and a single note on the second line (G4). Below each staff are two diagrams of a clarinet showing the fingerings for the note. 1. G#: Staff shows a whole note on the second line with a sharp sign above it. Diagrams show the left hand with index, middle, and ring fingers on keys 1, 2, and 3, and the right hand with index, middle, and ring fingers on keys 4, 5, and 6. 2. Ab: Staff shows a whole note on the second line with a flat sign above it. Diagrams show the left hand with index, middle, and ring fingers on keys 1, 2, and 3, and the right hand with index, middle, and ring fingers on keys 4, 5, and 6. 3. ANatural: Staff shows a whole note on the second line. Diagrams show the left hand with index, middle, and ring fingers on keys 1, 2, and 3, and the right hand with index, middle, and ring fingers on keys 4, 5, and 6. 4. A#: Staff shows a whole note on the second line with a sharp sign above it. Diagrams show the left hand with index, middle, and ring fingers on keys 1, 2, and 3, and the right hand with index, middle, and ring fingers on keys 4, 5, and 6. 5. Bb: Staff shows a whole note on the second line with a flat sign above it. Diagrams show the left hand with index, middle, and ring fingers on keys 1, 2, and 3, and the right hand with index, middle, and ring fingers on keys 4, 5, and 6. 6. BNatural: Staff shows a whole note on the second line. Diagrams show the left hand with index, middle, and ring fingers on keys 1, 2, and 3, and the right hand with index, middle, and ring fingers on keys 4, 5, and 6.

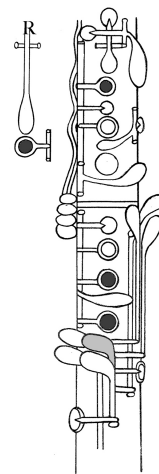
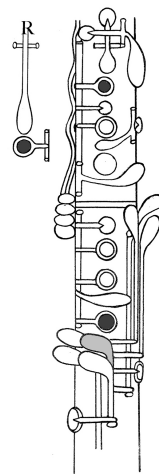
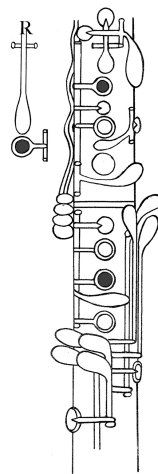
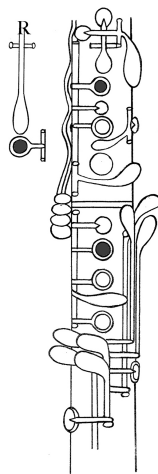
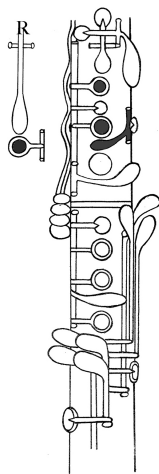
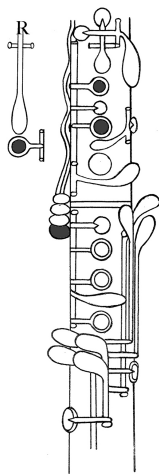
Master Clarinet Fingering Chart



Any Little
Finger key is
Optional

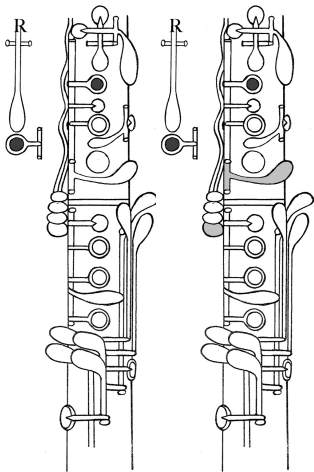
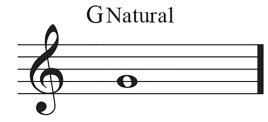
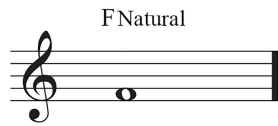
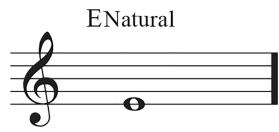
Any Little
Finger key is
Optional

Any Little
Finger key is
Optional

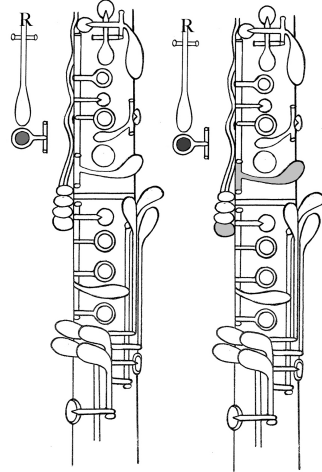


Any Little Finger Key is optional an any fingering

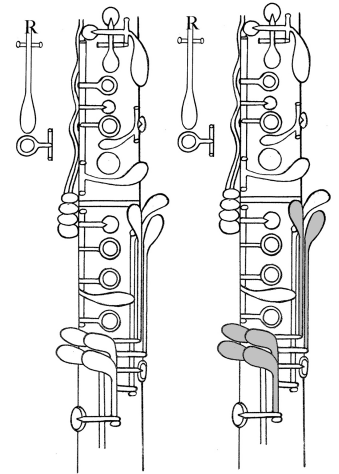
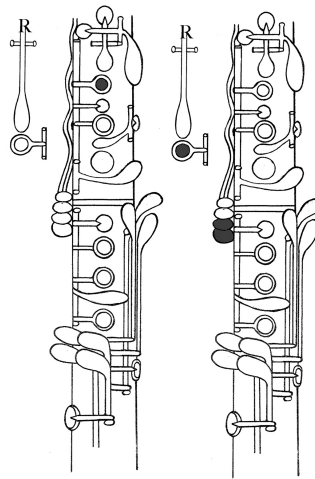
Master Clarinet Fingering Chart



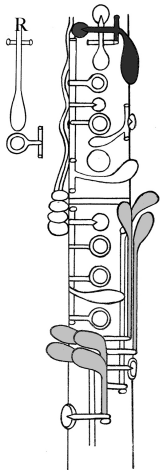
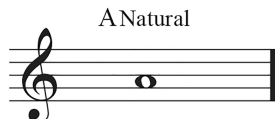
Optional
for volume



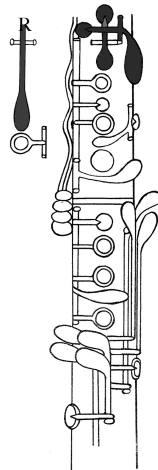
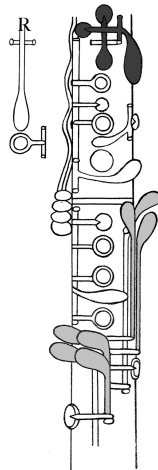
Optional
for volume



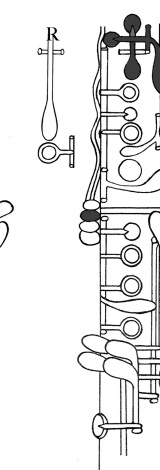
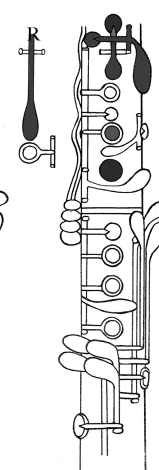
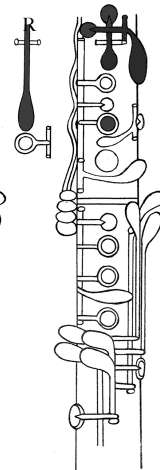
Any Little Finger Key is
Good for Balance



Any Little Finger Key is
Good for Balance



Helpd clear up the
B-Flat / A-Sharp

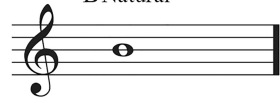


Best Tone
B-Flat / A-Sharp

*When playing from to any note using the right hand keys in both the lower and middle registers, experiment with what keys can be left down when playing the throat tones.


Master Clarinet Fingering Chart

B Natural

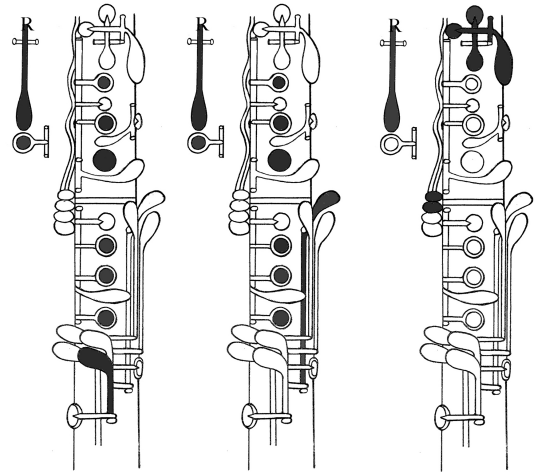
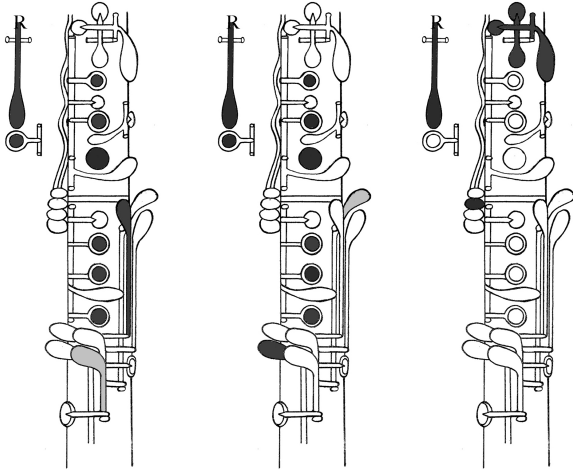


Musical notation for B Natural: A single quarter note on the second line of a treble clef staff.

C Natural



Musical notation for C Natural: A single quarter note on the first space of a treble clef staff.

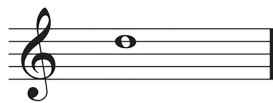


C# Db



Musical notation for C# and Db: A quarter note with a sharp sign on the second line, followed by a quarter note with a flat sign on the second space.

D Natural



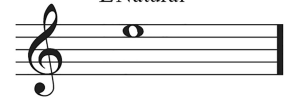
Musical notation for D Natural: A single quarter note on the second space of a treble clef staff.

D# Eb

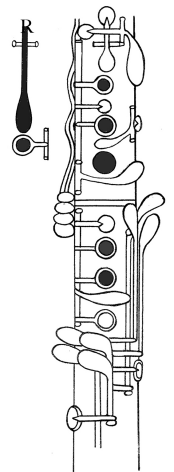
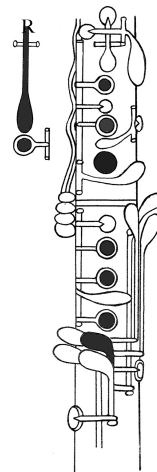
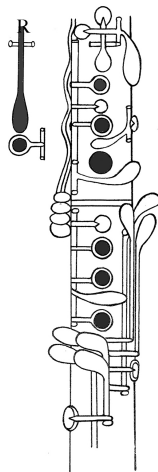
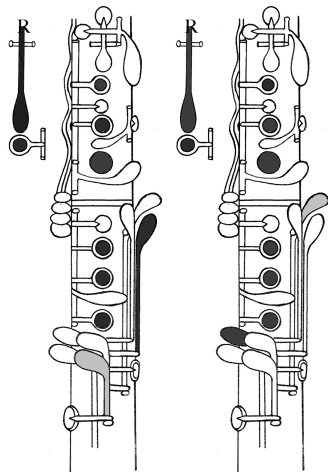


Musical notation for D# and Eb: A quarter note with a sharp sign on the second space, followed by a quarter note with a flat sign on the second line.

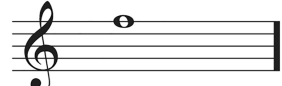

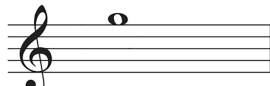
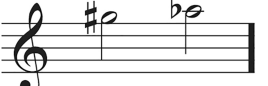
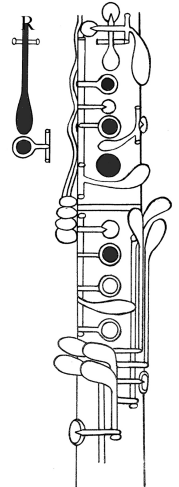
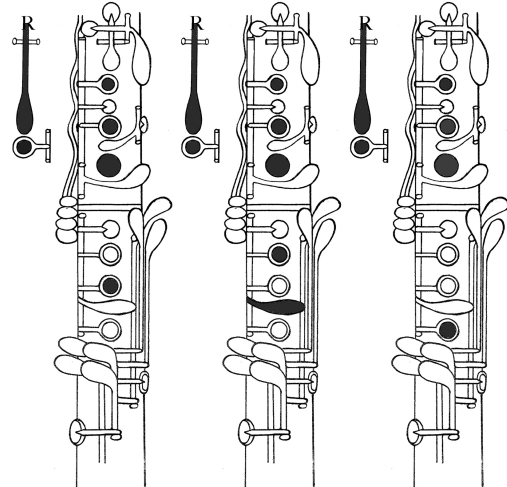
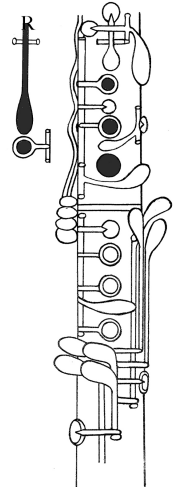
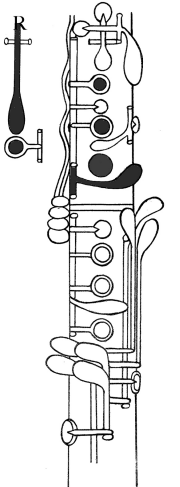
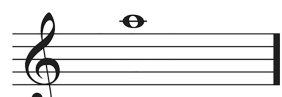

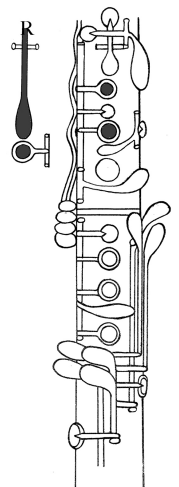
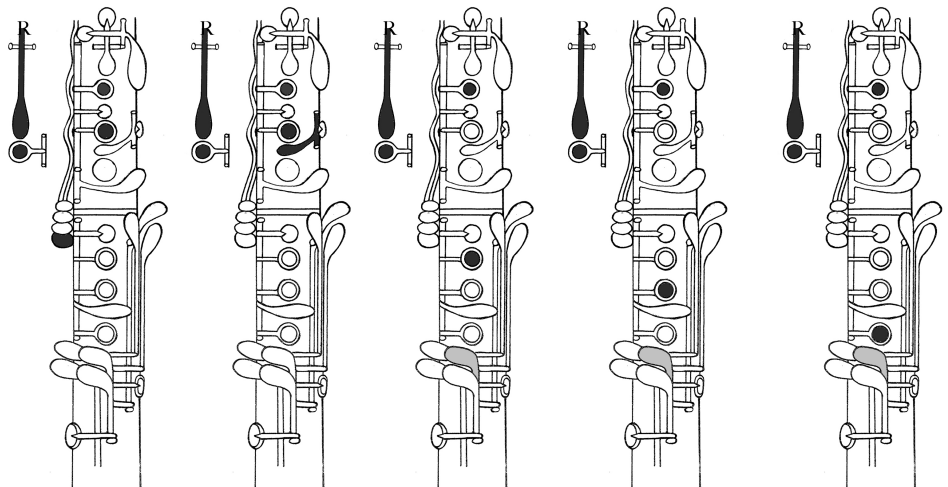
E Natural



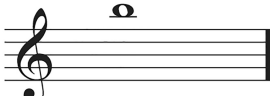
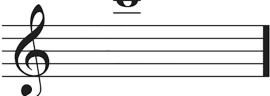

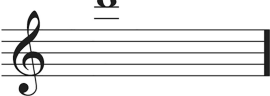
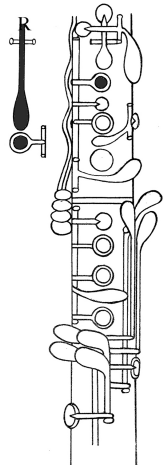
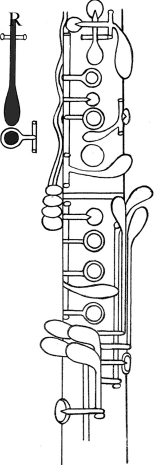
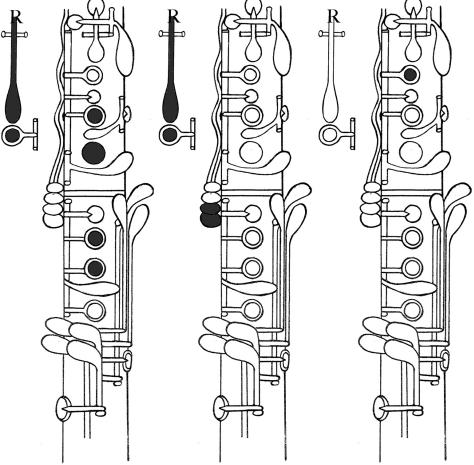
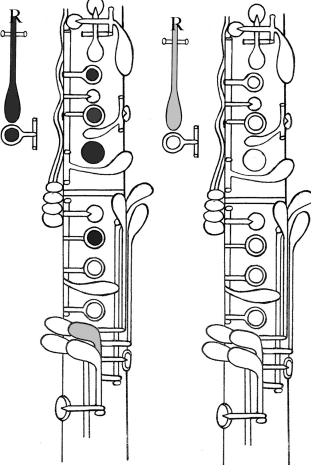

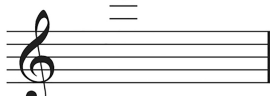
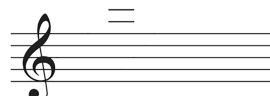
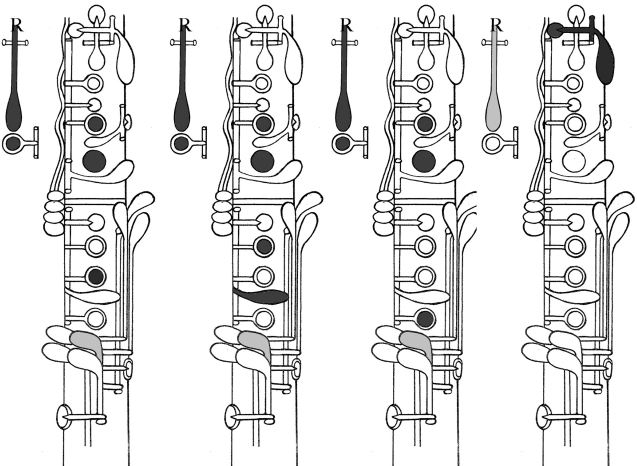
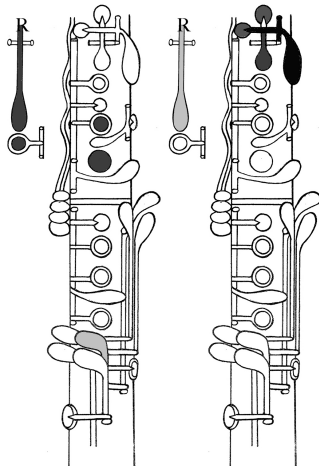
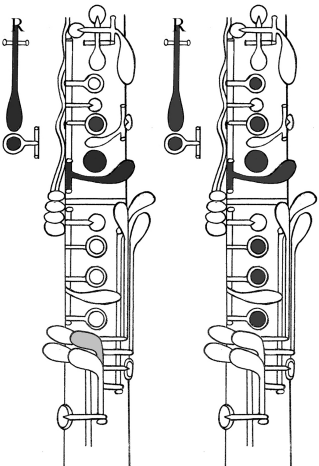
Musical notation for E Natural: A single quarter note on the second space of a treble clef staff.



Master Clarinet Fingering Chart

F Natural	F# Gb	G Natural	G# Ab
			
			
A Natural	A# Bb		
			
			

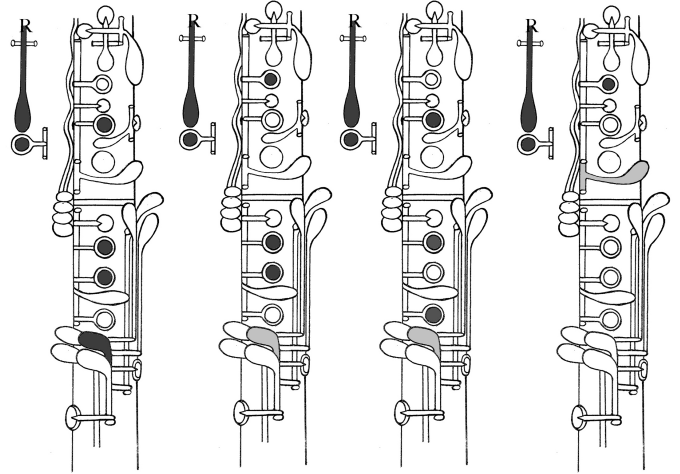
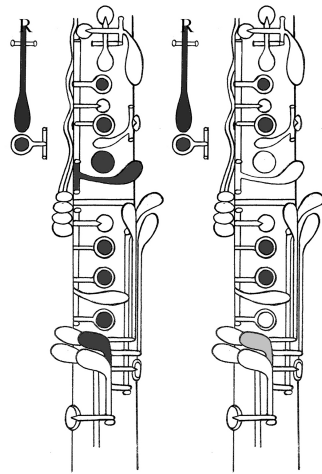
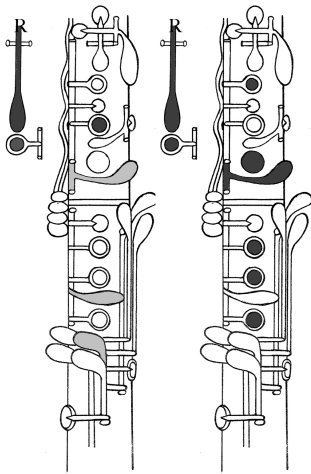
Master Clarinet Fingering Chart

B Natural	C Natural	C#	D \flat	D Natural
				
				
D#	E \flat	E Natural	F Natural	
				
				

Master Clarinet Fingering Chart

F# Gb

GNatural



G# Ab

ANatural

A# Bb

BNatural

CNatural

